

retro

REPLACEMENT LED POOL LIGHT



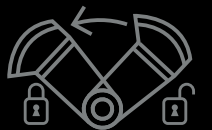
SE Spa Electrics

compatible with

**ALL 10"
NICHES**



QUICK-CONNECT
PLUG



PATENT-PENDING
CAM-LOCK SYSTEM

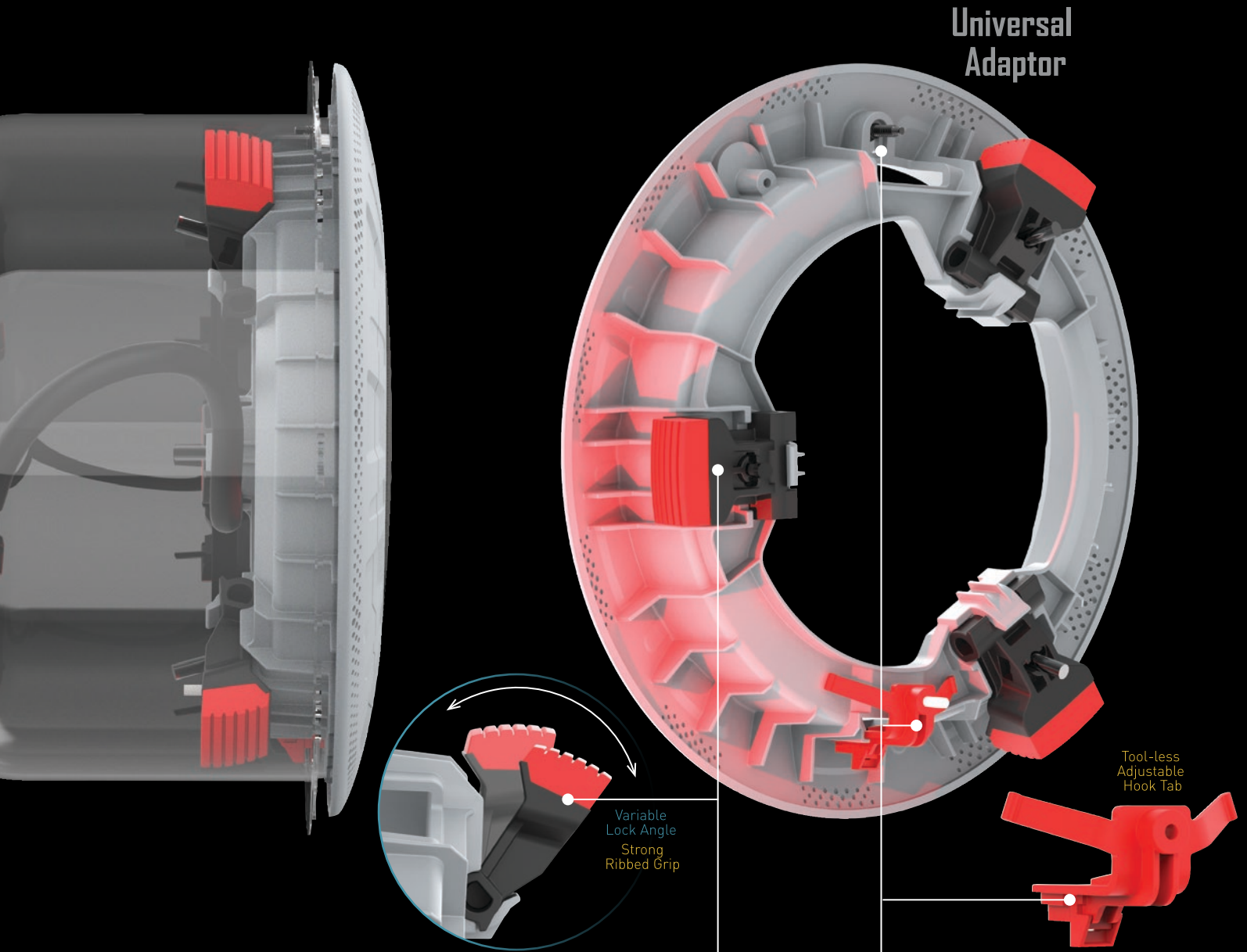
SE Spa Electrics®

R10

UNIVERSAL 10" CONCRETE REPLACEMENT POOL LIGHT

Designed by Builders for Builders

The only **Retro-Fit** light for 10" Niches you will ever need



CAM-LOCK Installation

There's no need for expensive repair work, as Retro R10's Universal Adaptor doesn't rely on intact niche mounting hooks or screws for installation.

It's **patented CAM-LOCKS** grip the niche wall as they're fitted, pulling the light and niche together for a secure fit.

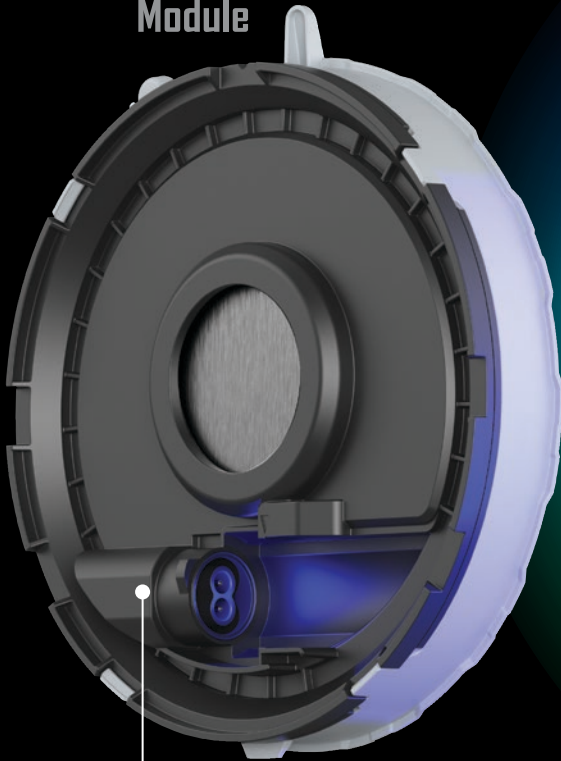
Standard Installation

If the existing niche mounting hooks and screws are intact, Retro R10 supports standard installation via the HOOK TAB at the base and the front facing screw at top.

The **HOOK TAB** at the base adjusts to suit all major brand niche tabs, without the need for extra washers or spacers.

R10

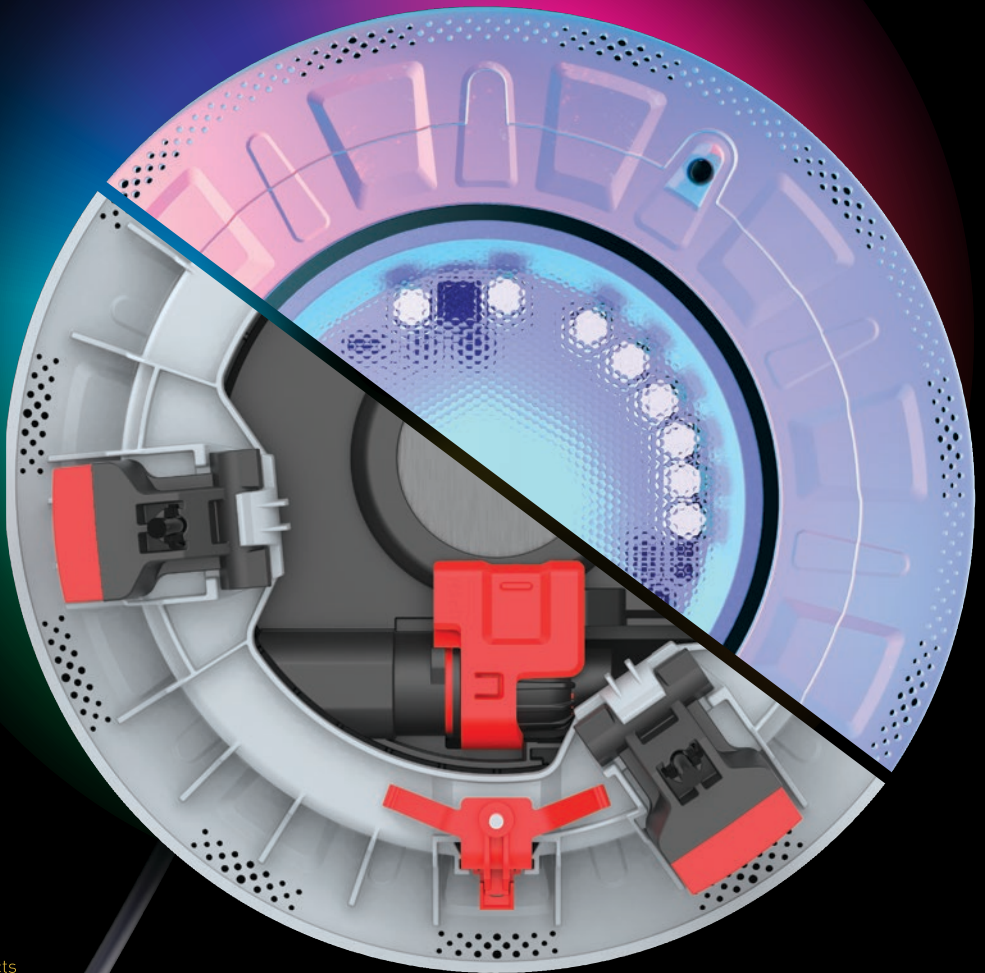
Light Module



Extra Safe
Low Voltage
12VAC



Connects
up to 12AWG
cord size



Retro R10 is the brightest LED retro-fit on the market with **over 3000 lumen** output.

The unique water cooled design harnesses the full cooling potential of your pools to maximize performance and extend product life. Retain the brilliance of a 300W halogen, while improving the look and safety of your pools with Retro R10.

Quick Connect Plug

Say goodbye to changing cables forever with Retro R10's **Quick Connect Plug**.

Connecting to the existing pool light cable in the niche, the **UL Listed Quick Connect Plug** ensures fast and reliable installation while also enabling easier future servicing in the field.

retro

REPLACEMENT LED POOL LIGHT

Compatibility

All major pool controller brands:
IntelliTouch® Omnilogic® AQUALINK®

All major brand niches:

American®
Anthony®
CHD®
Hayward®
Hydrel®
Jandy®
PacFab®
Paragon®
Pentair®
Purex®
Sta-Rite®
Swimquip®

Secure Fit

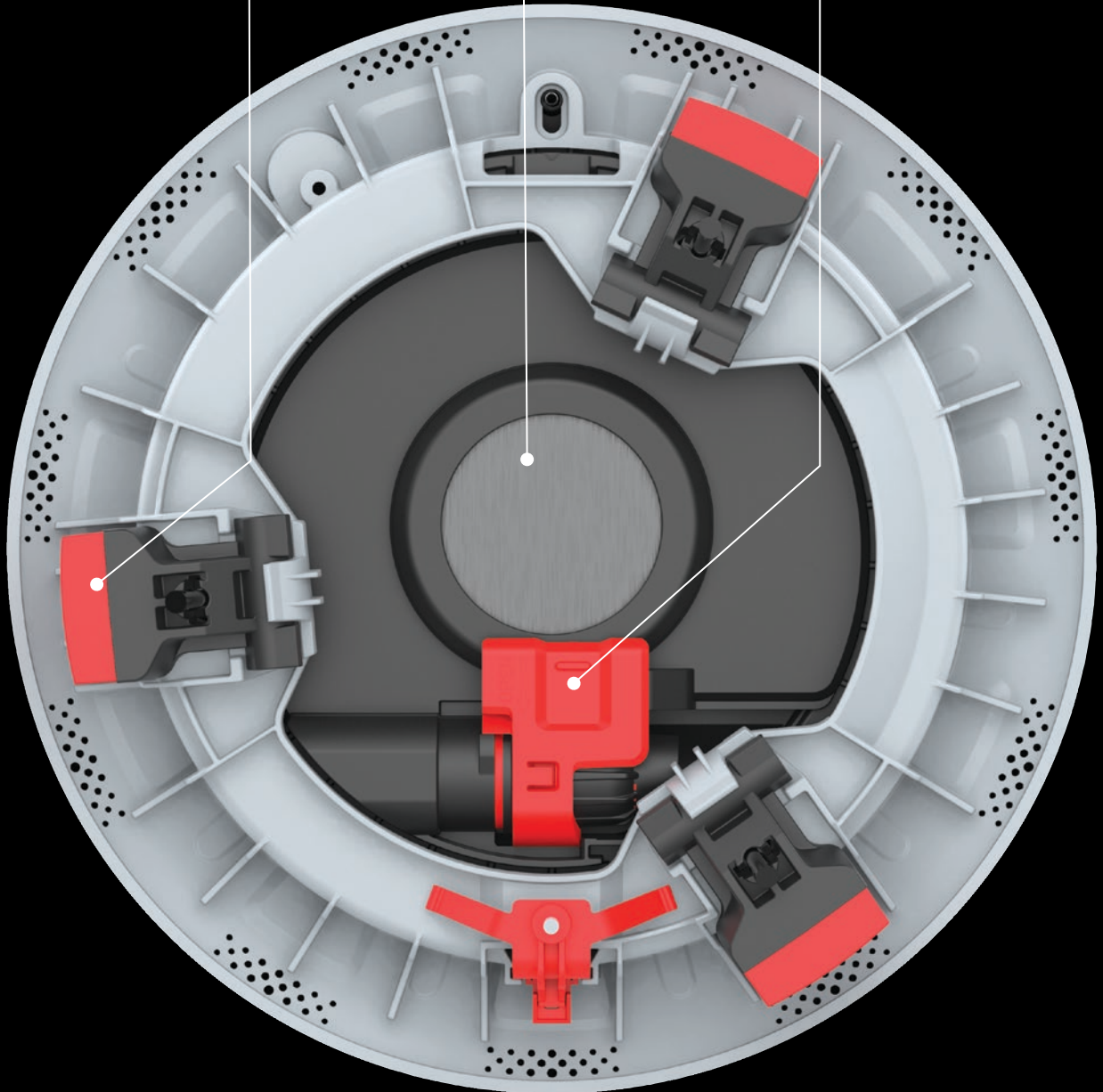
Universal Adaptor with
Patented CAM-LOCKS

Super Cool

Water-cooled system
3000lm+ Brightness

UL Listed

Simpler installation
and servicing
Quick Connect Plug



Product Specification	LED Color	LED Array	Wavelength	Lumens	Color Temp	
VOLTAGE:	10.5~13v AC	WHITE:	Warm	n/a	3200	3000k
WATTAGE:	45w	WHITE:	Daylight	n/a	3200	4000k
INGRESS PROTECTION:	IPX8	BLUE:	BLUE	465nm	1000	n/a
SUITABLE FOR:	10" ConcreteNiches	MULTIPLUS:	RGB+W	Varies	3200	4000k
COMPATIBLE WITH:	Extra Safe Low Voltage LVX Series Transformers					

For more information on the **Retro R10** and our other products, please visit our website or contact our US Office:

Toll Free: **1800 708 5545**
Email: info@spaelectrics.com
Web: www.spaelectrics.com

© Niche and Pool Controller brands mentioned remain copyright of respective manufacturers

Spa Electrics®

www.spaelectrics.com

